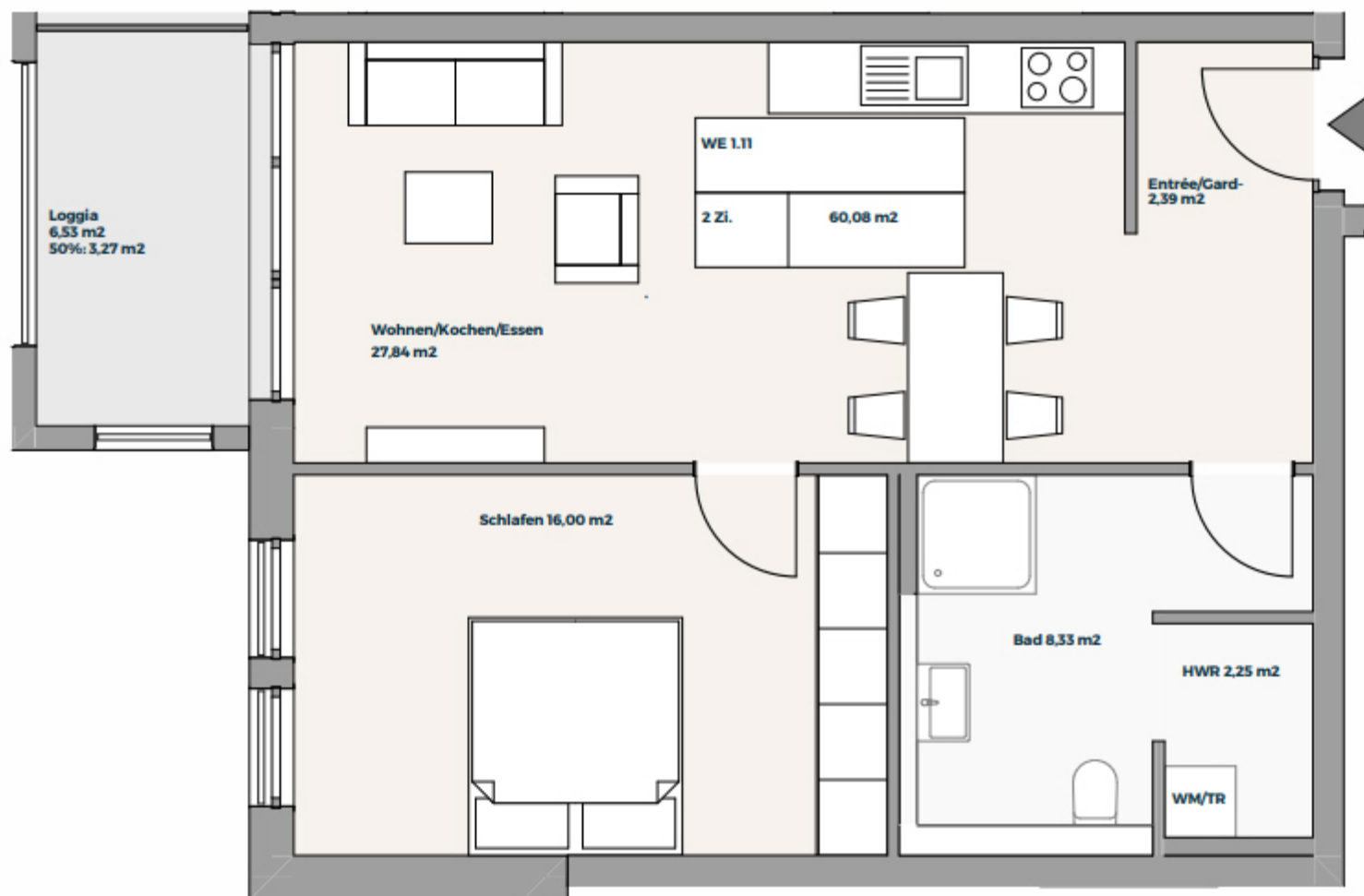


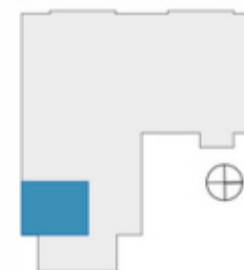
## 2. Obergeschoss

### WE 1.11 2-Zimmer



■ Entrée / Garderobe	2,39 m <sup>2</sup>
■ Bad	8,33 m <sup>2</sup>
■ HWR	2,25 m <sup>2</sup>
■ Schlafen	16,00 m <sup>2</sup>
■ Wohnen / Kochen / Essen	27,84 m <sup>2</sup>
■ Loggia 50 % (6,53 m <sup>2</sup> )	3,27 m <sup>2</sup>

**60,08 m<sup>2</sup>**



**Hinweis:**  
Möblierung beispielhaft.  
Anschlüsse bedingt anpassbar.